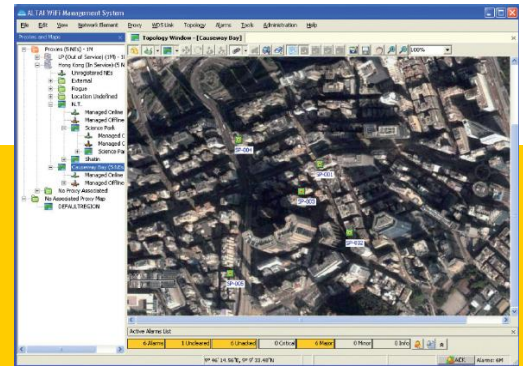


Altai Wireless Management System (AWMS)



The Altai Wireless Management System (AWMS) provides network operators a full suite of element and network management functions for WiFi networks. It facilitates operational functions that include configuration management, fault management, performance monitoring and security function. It reduces the complexity of network provisioning, operations and maintenance through remote and centralized administration.



Centralized Management of Network Equipment
AWMS provides network operators a centralized way to remotely administer and control WiFi base stations in the network, significantly reducing the workload for local configuration and monitoring. AWMS provides users a full network view so that the operator can monitor, at a glance, the whole network topology and status. This graphical view shows network layout, including inventory and configuration of each BTS in the network and all wireless facilities connecting them.

Accelerate Network Deployment
AWMS allows operator's flexibility in setting up a WiFi network. Once WiFi base stations are installed on site, auto-discovery and template-based mass provisioning will enable network operators to

configure large numbers of WiFi base stations quickly and enable the entire network to be operational in a short time.

Improve Network Health and Quality

AWMS collects equipment and wireless facility alarms both automatically and on-demand. It maintains the real-time status of the whole network and displays alarm information graphically and textually.

The user-friendly Graphical User Interface (GUI) presents and organizes correlated alarm information clearly. An operator can act quickly to reduce outages. The colour-coded logical network map uses icons to represent each managed Network Element. It enables fast, effective fault management through its visual alarm notification, alarm processing and tracking capabilities.

Enhance Network Security

AWMS allows network operators to set and continually enforce multi-layer network authentication and data encryption configurations, including SSID, ACL, WEP, 802.1x and WPA.

In addition, AWMS also simplifies and improves system security. It centralizes the administration of individual user accounts and online sessions, and provides a permission scheme that assigns users to different network geographic groups and functional groups.

Reduce Network Operating Cost

AWMS can help network operators to reduce operating costs by simplifying network administration and control throughout the network life cycle, in provisioning, operation and maintenance.

With AWMS, operators can handle today's WiFi network equipment while leaving room for growth and incorporating the ability to respond quickly to any emerging technologies and products, thereby protecting the users' investment.

As an integral part of our Super WiFi network infrastructure, main features of the AWMS include:

- Centralized management of network equipment
- Automatic BTS/AP detection and provisioning
- Template-based multiple BTS/AP configuration
- User-friendly graphical interface with network map
- Real-time network monitoring and proactive fault handling
- Inventory and connection status
- Multi-layer security management
- Performance monitoring
- WiFi CPE management
- WiFi client association reporting

Altai Wireless Management System (AWMS)

System Capacity

- Maximum Number of Network Elements (NE) 500*
- Maximum Number of C1 10,000#
- Maximum Number of NE per Proxy 200
- Maximum Number of Proxy per AWMS Server 4
- Maximum Number of Concurrent AWMS Users 4

Supported NE Type

- Altai A8 Super WiFi Base Station
- Altai A8-E Super WiFi Base Station
- Altai A3 Smart WiFi Access Point
- Altai A2 WiFi Access Point/ Bridge
- Altai A0 WiFi Bridge
- Altai C1 Super WiFi CPE

Hardware and Software Platform

- 2U server, Intel Xeon, 3.6 GHz, 2 GB RAM, 80 GB disk space, 100 Mbps Ethernet NIC card
- Windows Server 2003 x64 standard edition
- MySQL 5.0.18
- JDK 1.4.2

AWMS Feature Highlight

Configuration Management

- Single NE configuration
- Template-based multiple NE configuration
- NE grouping
- NE registration
- Automatic NE detection and provisioning
- Network configuration resynchronization and consistency check
- Configuration via network map

Fault Management

- Real-time alarm collection and reporting
- Visual network fault alerts via network map
- Alarm acknowledgement and forced deletion
- Alarm Email Alert
- Event logging
- Historical alarm tracking and reporting
- Alarm SNMP Trap for Northbound Integration

Software Management

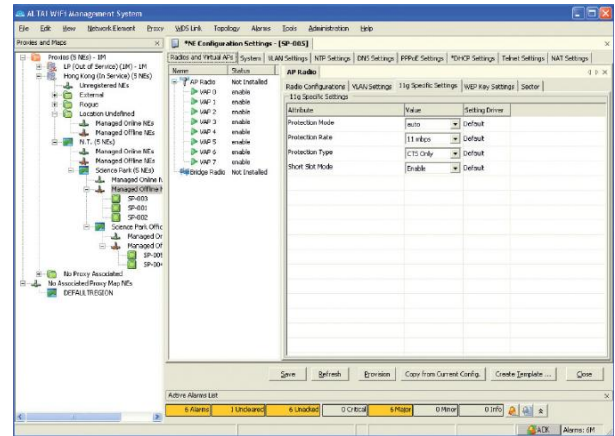
- On-demand schedule based firmware upgrade
- Multiple firmware image

Security Management

- System user security management
- WEP/ WPA
- MAC address access control
- Rogue AP detection

RF Management

- On-demand/schedule based channel scanning
- Channel scanning report



Performance Management

- Real time NE performance statistics
- Real time NE traffic load statistics
- NE communication quality statistics
- Network/NE performance reporting

Wireless Bridge-Link Management

- Link discovery
- Link inventory
- Link connection status monitoring

WiFi Client Management

- Client session notification and reporting
- Client association summary
- Client registration and searching

C1 CPE Management#

- Template based auto provisioning
- Schedule based firmware upgrade
- Remote Diagnosis and Troubleshooting
- Real time CPE connection and traffic statistics
- TR069 Support

Network Map Management

- Outdoor map (GPS alignment)
- Indoor map alignment
- NE location (GPS alignment)

GUI Languages supported

- English
- Simplified Chinese
- Traditional Chinese

Product Ordering Information

Standard Package

- AWMS Core Software
- For 1 to 25 NE
- Expandable to 500* NE by adding NE License Pack
- 1 year 8x5 remote technical support and software upgrade



Altai Technologies Limited
www.altatechnologies.com
AW-PB-100716

* Upgradeable to 2,000 NE in future release
Features will be available in future release